

GREENVIEW SHORES NO. 2 OF WELLINGTON (P.U.D.)

IN PART OF SECTION 16, TWP. 44S. RGE 41E,
PALM BEACH COUNTY, FLORIDA
IN 17 SHEETS SHEET NO. 17

SCALE IN FEET SCALE 1" = 100'

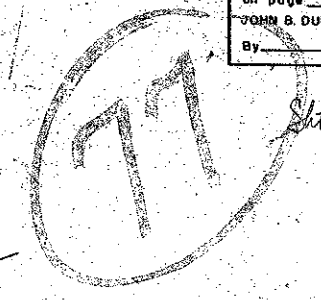
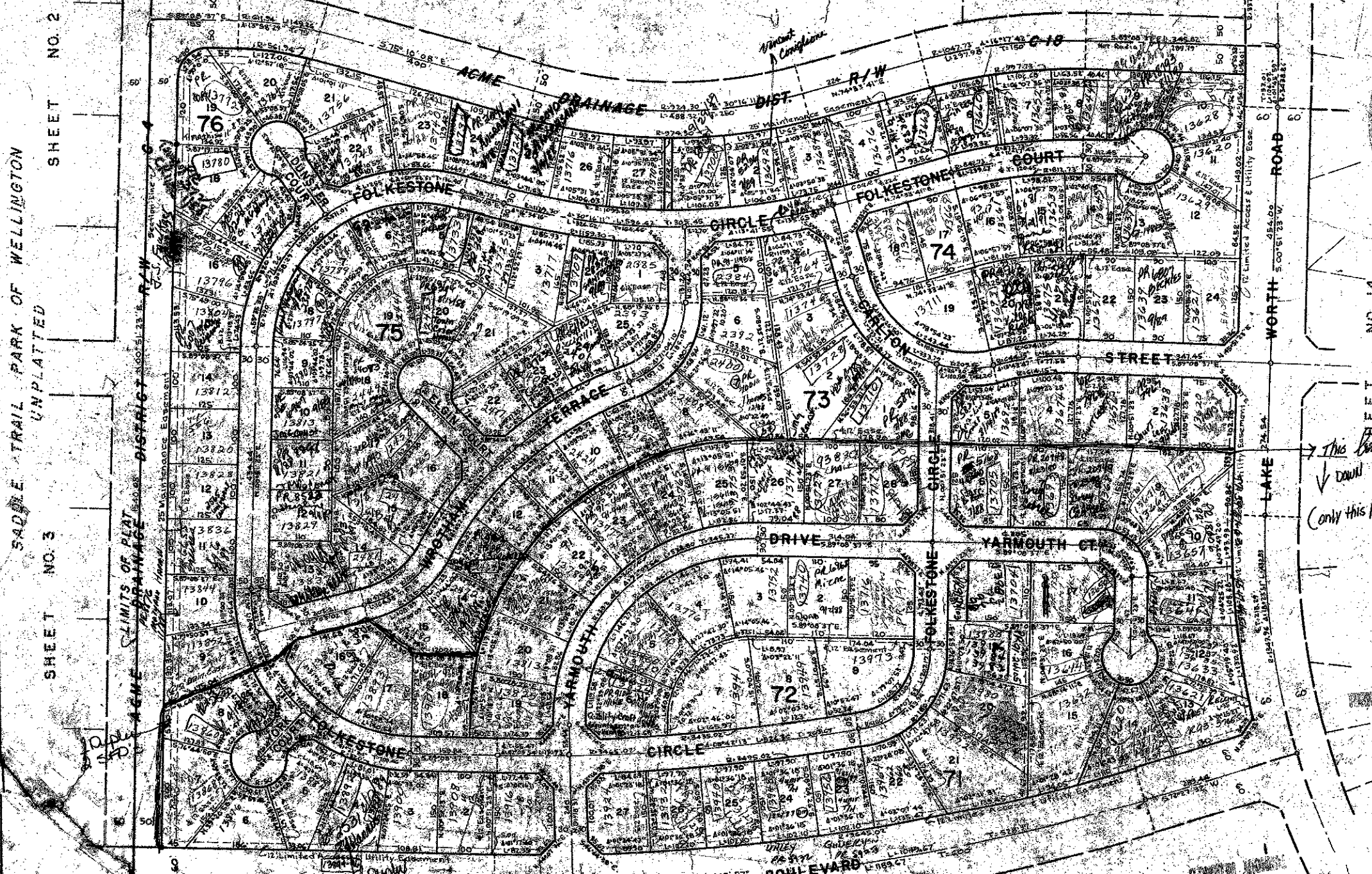
SEE & JENSON
CONSULTING ENGINEERS, INC.
WEST PALM BEACH, FLORIDA
FEBRUARY 1974

136

31

SHEET NO. 3

STATE OF FLORIDA
COUNTY OF PALM BEACH
This Plat was filed for record on
this day of
and duly recorded in Plat Book No.
on page
JOHN B. DUNKLE, Clerk Circuit Court
By



This area denotes 52 lots x 4 = 208
Multi Family
on master site plan
4/11/74

NOTE
Building Setback Lines shall be as required by
Palm Beach County Zoning Regulations.
There shall be no buildings or other structures
placed on Utility Easements.
There shall be no buildings or any kind of construction
or trees or shrubs placed on Drainage Easements.
Easements are for Public Utilities, unless
otherwise noted.
o denotes Permanent Control Point
● denotes Permanent Reference Monument
All bearings shown hereon are relative to an
assumed meridian.
All lots with double frontage access will be deemed
street only, except where otherwise noted.
Where Utility Easements and Drainage Easements
cross, Drainage Easements shall take precedence.

RECORD INFORMATION
SUBDIVISION: Greenview Shores #2
BOOK: 31
PAGE: 136
DATE: 1/25/74
BY: W.A. 77
FILE NO: Wellington 136

Greenview Shores #2 Well
0332-030
31/136

This instrument was prepared by
William G. Wallace, Jr. 2019 Orange Blossom Blvd.
West Palm Beach, Florida

SADDLE TRAIL PARK OF WELLINGTON
UNPLATTED

SHEET NO. 2

SHEET NO. 3

SECTION 17
SECTION 16

AGME DISTRICT NO. 17
LIMITS OF PLAT
DRAINAGE

AGME DISTRICT NO. 17
LIMITS OF PLAT
DRAINAGE

SHEET NO. 16